



# Demographic and Income Comparison Profile

270 E Main St, Canton, Georgia, 30114 2  
 270 E Main St, Canton, Georgia, 30114  
 Rings: 1, 3, 5 mile radii

Prepared by Esri  
 Latitude: 34.23673  
 Longitude: -84.48938

	1 mile	3 miles	5 miles
<b>Census 2010 Summary</b>			
Population	4,772	23,395	53,443
Households	1,607	8,189	18,585
Families	1,045	5,726	13,803
Average Household Size	2.89	2.76	2.83
Owner Occupied Housing Units	618	4,847	13,044
Renter Occupied Housing Units	989	3,342	5,541
Median Age	30.2	33.4	33.9
<b>2020 Summary</b>			
Population	5,641	30,375	70,059
Households	1,884	10,618	24,146
Families	1,182	7,358	17,794
Average Household Size	2.91	2.77	2.86
Owner Occupied Housing Units	587	6,340	16,659
Renter Occupied Housing Units	1,296	4,277	7,488
Median Age	31.1	35.1	35.6
Median Household Income	\$35,067	\$56,908	\$69,191
Average Household Income	\$54,819	\$87,640	\$94,175
<b>2025 Summary</b>			
Population	6,319	33,782	77,643
Households	2,129	11,824	26,760
Families	1,325	8,123	19,576
Average Household Size	2.90	2.78	2.87
Owner Occupied Housing Units	673	6,994	18,148
Renter Occupied Housing Units	1,456	4,829	8,612
Median Age	31.5	35.5	35.5
Median Household Income	\$37,967	\$61,316	\$75,579
Average Household Income	\$60,081	\$95,635	\$103,924
<b>Trends: 2020-2025 Annual Rate</b>			
Population	2.30%	2.15%	2.08%
Households	2.48%	2.17%	2.08%
Families	2.31%	2.00%	1.93%
Owner Households	2.77%	1.98%	1.73%
Median Household Income	1.60%	1.50%	1.78%

Source: U.S. Census Bureau, Census 2010 Summary File 1. Esri forecasts for 2020 and 2025.



# Demographic and Income Comparison Profile

270 E Main St, Canton, Georgia, 30114 2  
 270 E Main St, Canton, Georgia, 30114  
 Rings: 1, 3, 5 mile radii

Prepared by Esri  
 Latitude: 34.23673  
 Longitude: -84.48938

2020 Households by Income	1 mile		3 miles		5 miles	
	Number	Percent	Number	Percent	Number	Percent
<\$15,000	348	18.5%	1,147	10.8%	2,123	8.8%
\$15,000 - \$24,999	358	19.0%	1,074	10.1%	1,831	7.6%
\$25,000 - \$34,999	233	12.4%	807	7.6%	1,791	7.4%
\$35,000 - \$49,999	307	16.3%	1,644	15.5%	3,097	12.8%
\$50,000 - \$74,999	252	13.4%	1,777	16.7%	3,921	16.2%
\$75,000 - \$99,999	109	5.8%	1,180	11.1%	3,137	13.0%
\$100,000 - \$149,999	163	8.7%	1,480	13.9%	4,413	18.3%
\$150,000 - \$199,999	55	2.9%	553	5.2%	1,726	7.1%
\$200,000+	57	3.0%	956	9.0%	2,107	8.7%
Median Household Income	\$35,067		\$56,908		\$69,191	
Average Household Income	\$54,819		\$87,640		\$94,175	
Per Capita Income	\$17,758		\$30,342		\$32,703	

2025 Households by Income	1 mile		3 miles		5 miles	
	Number	Percent	Number	Percent	Number	Percent
<\$15,000	328	15.4%	1,067	9.0%	2,064	7.7%
\$15,000 - \$24,999	380	17.8%	1,113	9.4%	1,861	7.0%
\$25,000 - \$34,999	261	12.3%	865	7.3%	1,818	6.8%
\$35,000 - \$49,999	364	17.1%	1,789	15.1%	3,264	12.2%
\$50,000 - \$74,999	315	14.8%	1,980	16.7%	4,266	15.9%
\$75,000 - \$99,999	141	6.6%	1,357	11.5%	3,473	13.0%
\$100,000 - \$149,999	209	9.8%	1,823	15.4%	5,209	19.5%
\$150,000 - \$199,999	67	3.1%	708	6.0%	2,150	8.0%
\$200,000+	64	3.0%	1,123	9.5%	2,655	9.9%
Median Household Income	\$37,967		\$61,316		\$75,579	
Average Household Income	\$60,081		\$95,635		\$103,924	
Per Capita Income	\$19,558		\$33,146		\$36,103	

**Data Note:** Income is expressed in current dollars.

**Source:** U.S. Census Bureau, Census 2010 Summary File 1. Esri forecasts for 2020 and 2025.



# Demographic and Income Comparison Profile

270 E Main St, Canton, Georgia, 30114 2  
 270 E Main St, Canton, Georgia, 30114  
 Rings: 1, 3, 5 mile radii

Prepared by Esri  
 Latitude: 34.23673  
 Longitude: -84.48938

2010 Population by Age	1 mile		3 miles		5 miles	
	Number	Percent	Number	Percent	Number	Percent
Age 0 - 4	488	10.2%	1,978	8.5%	4,629	8.7%
Age 5 - 9	389	8.2%	1,889	8.1%	4,675	8.7%
Age 10 - 14	299	6.3%	1,536	6.6%	3,879	7.3%
Age 15 - 19	277	5.8%	1,424	6.1%	3,188	6.0%
Age 20 - 24	423	8.9%	1,692	7.2%	3,148	5.9%
Age 25 - 34	898	18.8%	3,747	16.0%	8,144	15.2%
Age 35 - 44	634	13.3%	3,480	14.9%	8,819	16.5%
Age 45 - 54	469	9.8%	2,800	12.0%	6,789	12.7%
Age 55 - 64	366	7.7%	2,232	9.5%	4,951	9.3%
Age 65 - 74	250	5.2%	1,511	6.5%	3,166	5.9%
Age 75 - 84	170	3.6%	740	3.2%	1,442	2.7%
Age 85+	108	2.3%	367	1.6%	612	1.1%

2020 Population by Age	1 mile		3 miles		5 miles	
	Number	Percent	Number	Percent	Number	Percent
Age 0 - 4	531	9.4%	2,254	7.4%	5,269	7.5%
Age 5 - 9	443	7.9%	2,222	7.3%	5,654	8.1%
Age 10 - 14	390	6.9%	2,166	7.1%	5,514	7.9%
Age 15 - 19	353	6.3%	2,050	6.7%	4,605	6.6%
Age 20 - 24	451	8.0%	1,939	6.4%	3,752	5.4%
Age 25 - 34	1,051	18.6%	4,519	14.9%	9,560	13.6%
Age 35 - 44	765	13.6%	4,200	13.8%	10,692	15.3%
Age 45 - 54	515	9.1%	3,828	12.6%	9,299	13.3%
Age 55 - 64	452	8.0%	3,167	10.4%	7,388	10.5%
Age 65 - 74	364	6.5%	2,337	7.7%	5,028	7.2%
Age 75 - 84	204	3.6%	1,245	4.1%	2,491	3.6%
Age 85+	121	2.1%	448	1.5%	807	1.2%

2025 Population by Age	1 mile		3 miles		5 miles	
	Number	Percent	Number	Percent	Number	Percent
Age 0 - 4	598	9.5%	2,511	7.4%	5,903	7.6%
Age 5 - 9	488	7.7%	2,425	7.2%	6,143	7.9%
Age 10 - 14	419	6.6%	2,409	7.1%	6,067	7.8%
Age 15 - 19	390	6.2%	2,226	6.6%	5,164	6.7%
Age 20 - 24	524	8.3%	2,260	6.7%	4,259	5.5%
Age 25 - 34	1,125	17.8%	4,830	14.3%	10,629	13.7%
Age 35 - 44	901	14.3%	4,828	14.3%	12,050	15.5%
Age 45 - 54	568	9.0%	4,018	11.9%	9,605	12.4%
Age 55 - 64	505	8.0%	3,492	10.3%	7,935	10.2%
Age 65 - 74	420	6.6%	2,651	7.8%	5,715	7.4%
Age 75 - 84	259	4.1%	1,617	4.8%	3,215	4.1%
Age 85+	123	1.9%	514	1.5%	958	1.2%

Source: U.S. Census Bureau, Census 2010 Summary File 1. Esri forecasts for 2020 and 2025.



# Demographic and Income Comparison Profile

270 E Main St, Canton, Georgia, 30114 2  
 270 E Main St, Canton, Georgia, 30114  
 Rings: 1, 3, 5 mile radii

Prepared by Esri  
 Latitude: 34.23673  
 Longitude: -84.48938

2010 Race and Ethnicity	1 mile		3 miles		5 miles	
	Number	Percent	Number	Percent	Number	Percent
White Alone	3,122	65.4%	18,572	79.4%	44,786	83.8%
Black Alone	429	9.0%	1,597	6.8%	3,367	6.3%
American Indian Alone	63	1.3%	207	0.9%	305	0.6%
Asian Alone	35	0.7%	195	0.8%	627	1.2%
Pacific Islander Alone	33	0.7%	58	0.2%	71	0.1%
Some Other Race Alone	941	19.7%	2,188	9.4%	3,080	5.8%
Two or More Races	148	3.1%	579	2.5%	1,207	2.3%
Hispanic Origin (Any Race)	1,776	37.2%	4,675	20.0%	7,258	13.6%

2020 Race and Ethnicity	1 mile		3 miles		5 miles	
	Number	Percent	Number	Percent	Number	Percent
White Alone	3,423	60.7%	23,160	76.2%	56,622	80.8%
Black Alone	629	11.2%	2,618	8.6%	5,595	8.0%
American Indian Alone	74	1.3%	266	0.9%	397	0.6%
Asian Alone	50	0.9%	330	1.1%	1,057	1.5%
Pacific Islander Alone	46	0.8%	85	0.3%	105	0.1%
Some Other Race Alone	1,202	21.3%	2,985	9.8%	4,300	6.1%
Two or More Races	215	3.8%	930	3.1%	1,984	2.8%
Hispanic Origin (Any Race)	2,308	40.9%	6,521	21.5%	10,434	14.9%

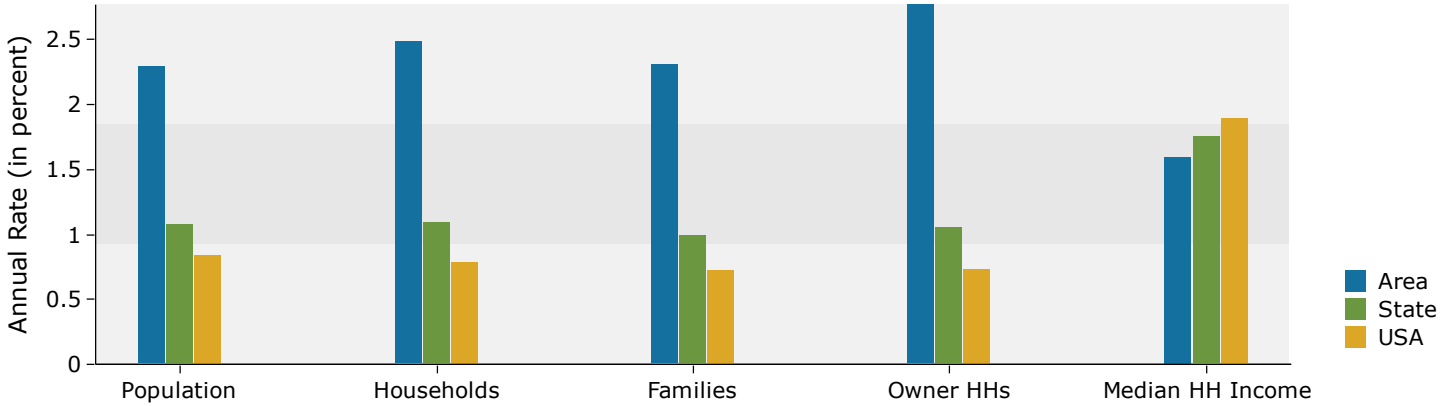
  

2025 Race and Ethnicity	1 mile		3 miles		5 miles	
	Number	Percent	Number	Percent	Number	Percent
White Alone	3,687	58.3%	24,912	73.7%	61,050	78.6%
Black Alone	770	12.2%	3,299	9.8%	7,031	9.1%
American Indian Alone	85	1.3%	314	0.9%	471	0.6%
Asian Alone	61	1.0%	414	1.2%	1,320	1.7%
Pacific Islander Alone	52	0.8%	99	0.3%	123	0.2%
Some Other Race Alone	1,411	22.3%	3,631	10.7%	5,277	6.8%
Two or More Races	253	4.0%	1,112	3.3%	2,370	3.1%
Hispanic Origin (Any Race)	2,678	42.4%	7,809	23.1%	12,584	16.2%

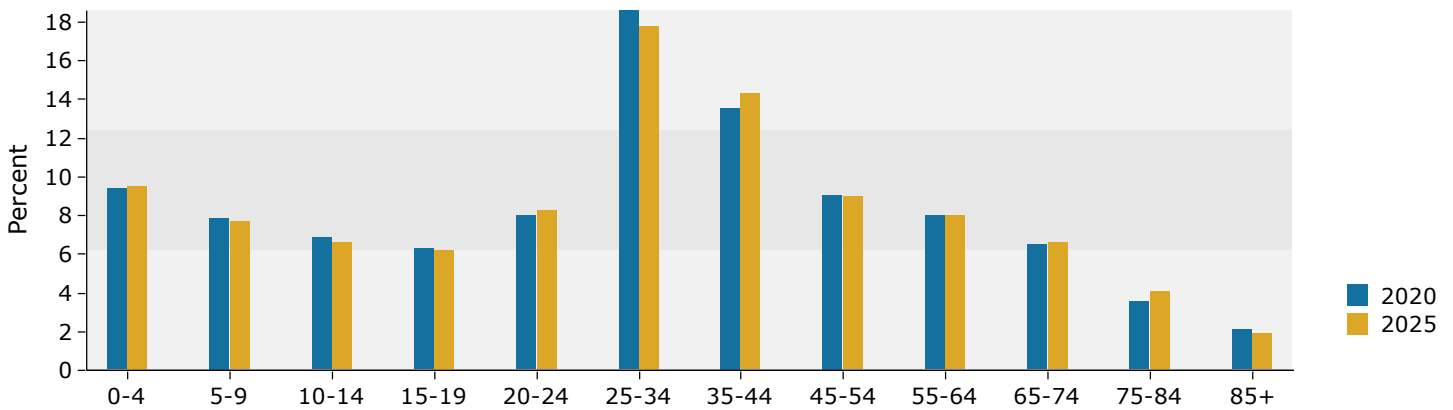
Source: U.S. Census Bureau, Census 2010 Summary File 1. Esri forecasts for 2020 and 2025.

## 1 mile

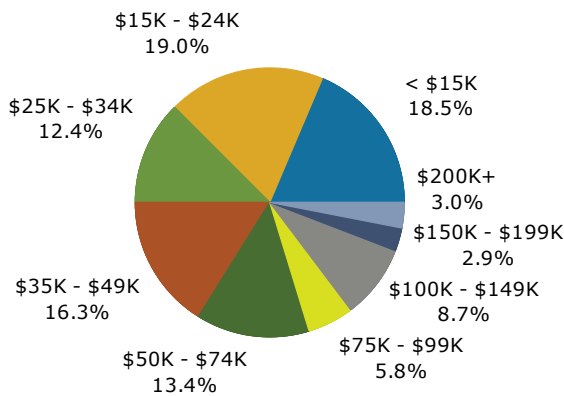
### Trends 2020-2025



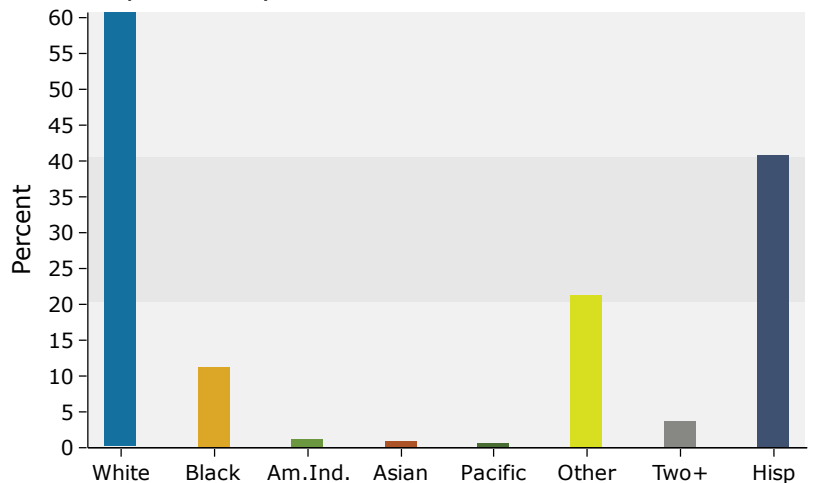
### Population by Age



### 2020 Household Income



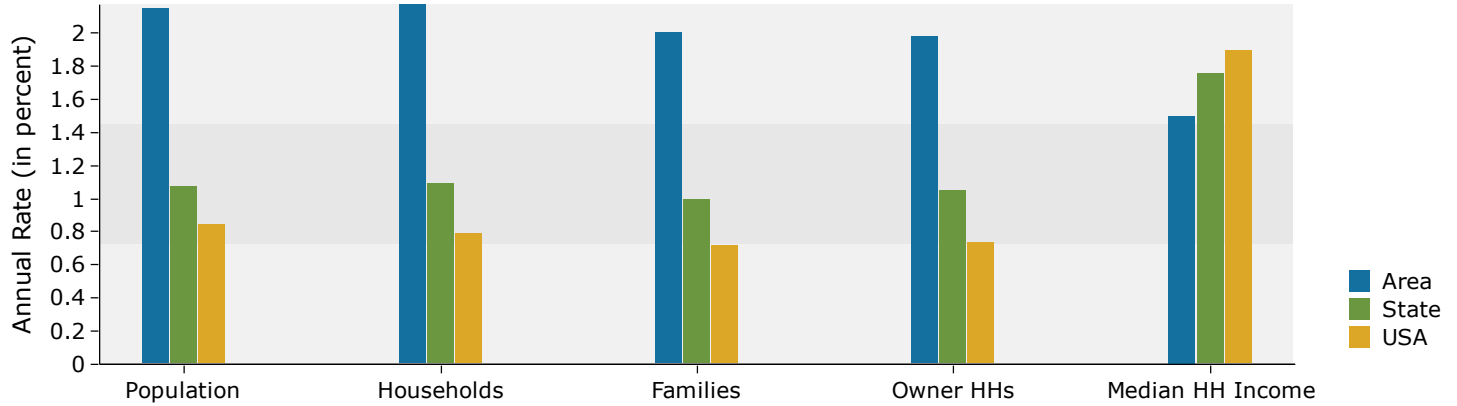
### 2020 Population by Race



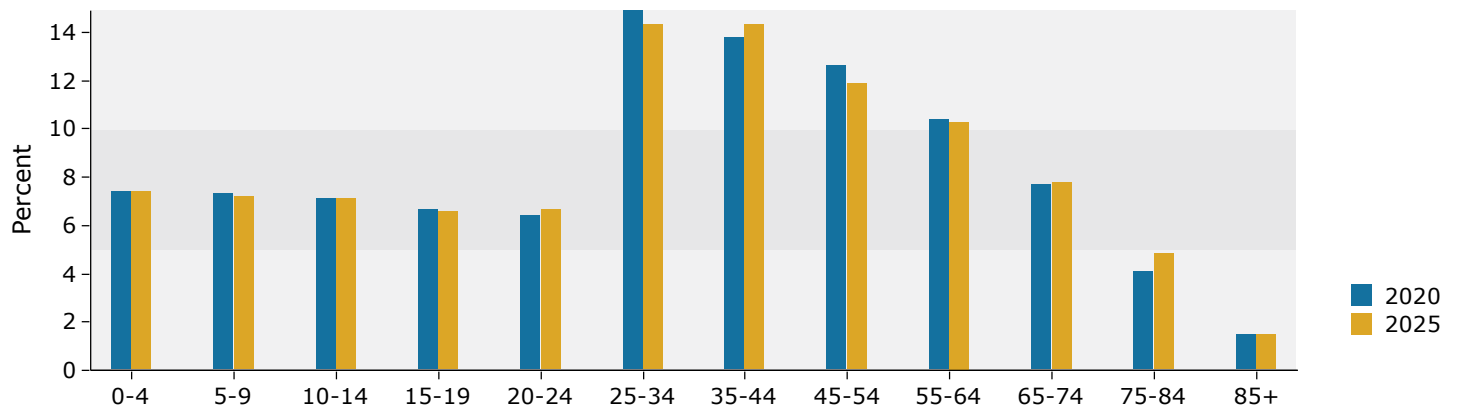
Source: U.S. Census Bureau, Census 2010 Summary File 1. Esri forecasts for 2020 and 2025.

## 3 miles

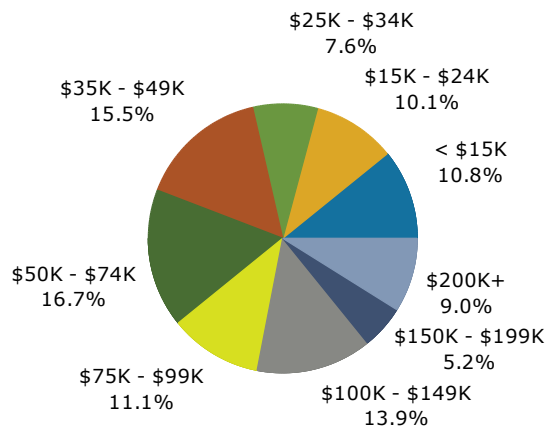
### Trends 2020-2025



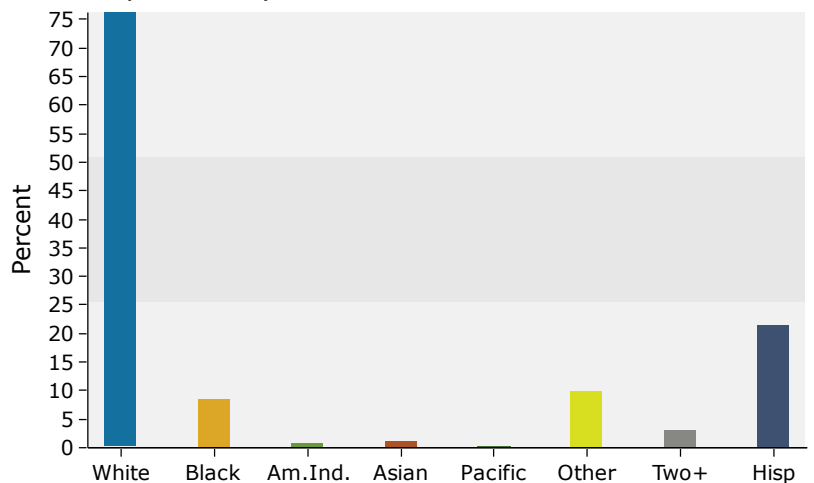
### Population by Age



### 2020 Household Income



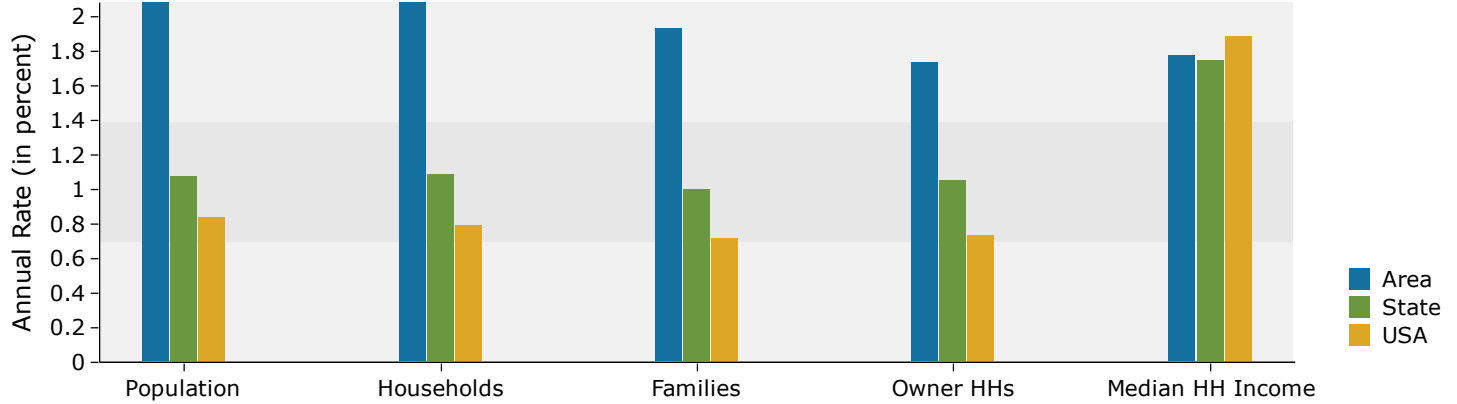
### 2020 Population by Race



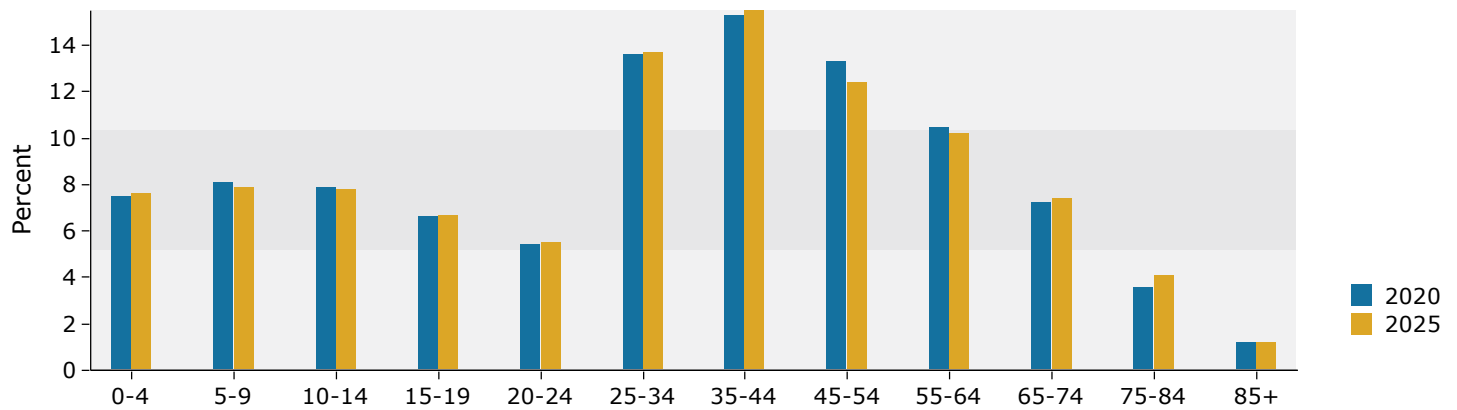
Source: U.S. Census Bureau, Census 2010 Summary File 1. Esri forecasts for 2020 and 2025.

## 5 miles

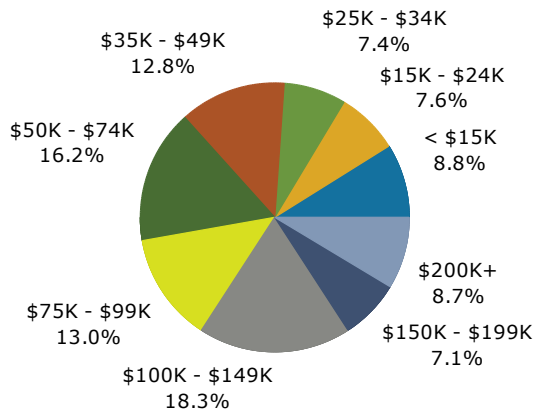
### Trends 2020-2025



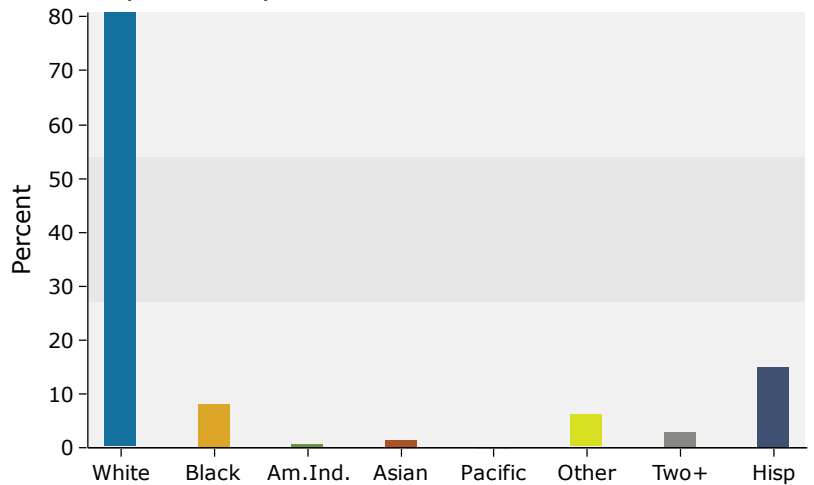
### Population by Age



### 2020 Household Income



### 2020 Population by Race



Source: U.S. Census Bureau, Census 2010 Summary File 1. Esri forecasts for 2020 and 2025.