



**FOR LEASE**

**ParkLane on Peachtree Office Space**

**PROFILE**

- Prime office space in a high profile, first floor corner location - the former sales office of ParkLane on Peachtree Condominiums
- 1,400 Square Feet
- Large reception area and 5 offices - 3 with huge windows overlooking the ParkLane courtyard
- Entrances from Peachtree and the building lobby
- 4 dedicated parking spaces immediately outside of the Peachtree Road entrance

**AVAILABLE OFFICE SUITE**

**LOCATION**

- Located at the corner of Peachtree Road and Lindbergh Drive at a highly traveled, signalized intersection
- Centered between Peachtree Battle and West Wesley in one of the most affluent areas of Atlanta
- Strong demographics with a population of over 300,000 in a 5 mile radius
- Traffic counts: Peachtree 36,256 VPD  
Lindbergh 11,400 VPD
- Excellent signage opportunity with high visibility from Peachtree Road
- Three access points - 1 on Peachtree and 2 on Lindbergh



**SIGNAGE OPPORTUNITY**

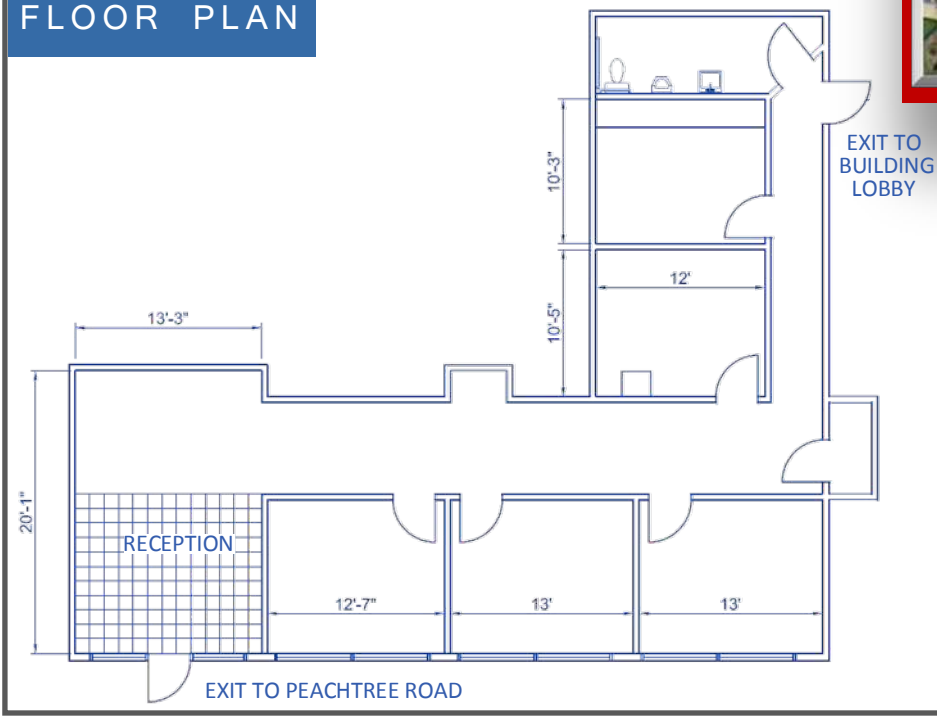


DEMOGRAPHICS	1 MILE	3 MILE	5 MILE
Total Population	16,468	117,770	307,476
Households	9,373	63,043	144,220
Average HH Income	\$97,256	\$99,531	\$89,823

**AERIAL PERSPECTIVE**



**FLOOR PLAN**



**ParkLane on Peachtree**  
2479 Peachtree Road  
Atlanta, Georgia 30305  
Suite CU-1

PHOTO GALLERY

